

Section IV: U.S. Coast Guard

The U.S. Coast Guard is the smallest of the five armed services. The Coast Guard is part of the Department of Homeland Security (DHS); however, in wartime, the Coast Guard may be called to join the Navy, and therefore fall under DoD jurisdiction.²⁰

In FY10, U.S. Coast Guard AC endstrength was made up of 33,000 enlisted personnel and 7,000 officers. This was a decrease of 3.4 percent in enlisted endstrength and an increase of 0.3 percent in the officer corps from FY09 levels. U.S. Coast Guard RC endstrength consisted of 6,600 enlisted members and 1,200 officers in FY10. RC enlisted endstrength grew by 4.7 percent between FY09 and FY10, while the RC officer corps shrank by 3.2 percent.

Quality of AC enlisted applicants and accessions

The U.S. Coast Guard AC had 5,600 applicants and some 2,200 NPS enlisted accessions in FY10.²¹ Almost 30 percent of both applicants and accessions were women, which is higher than in any of the DoD services.

Like the DoD services, the U.S. Coast Guard prefers recruits with a high AFQT score (above the 50th percentile) and with Tier 1 educational credentials.²² In figure 24, we present the FY10 percentages of AC applicants and enlisted accessions with an AFQT score at or above the 50th percentile and the percentages with Tier 1 educational credentials. Then, in figure 25, we compare the quality of AC enlisted accessions across the five armed services (DoD and Coast Guard).²³

We find that the U.S. Coast Guard's AC applicant distribution across AFQT score categories in FY10 was similar to that of the other military services. Almost 69 percent of U.S. Coast Guard applicants scored above the 50th percentile in FY10 (see figure 24). Despite an applicant pool that was similar to those of the other services, the Coast Guard had the highest proportion of accessions who scored in the top half of the AFQT distribution (95 percent), had Tier 1 education credentials (99.3 percent), and were classified as high quality (94.6 percent) (see figure 25).

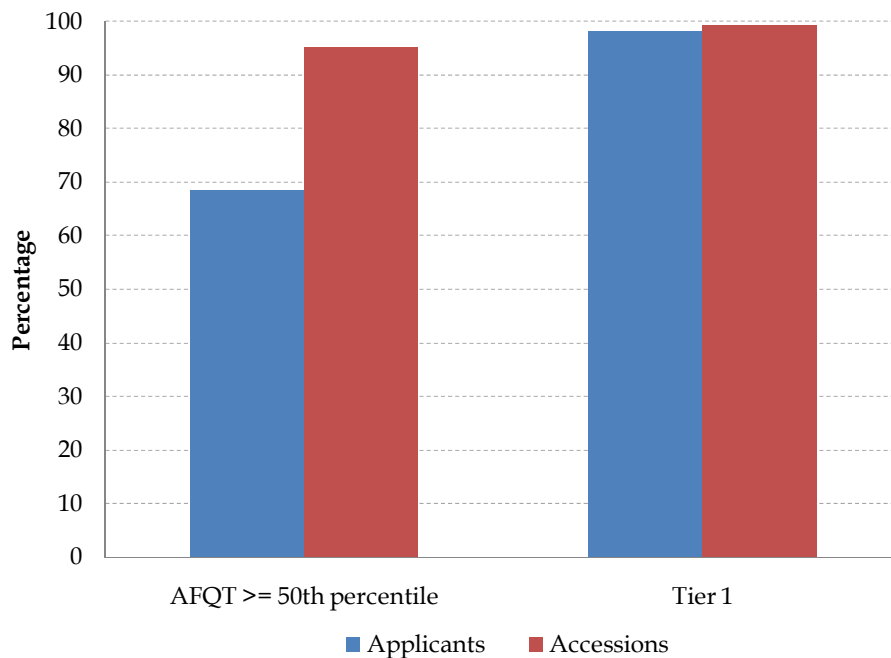
²⁰ Title 14 of the United States Code governs the process by which authority over the Coast Guard may be transferred to DoD in wartime.

²¹ As in the DoD sections (II and III), enlisted accessions include only NPS enlisted personnel because PS enlisted accessions make up a relatively small percentage of all enlisted accessions.

²² Tier 1 educational credentials include a high school diploma, an adult education diploma, and one semester of college.

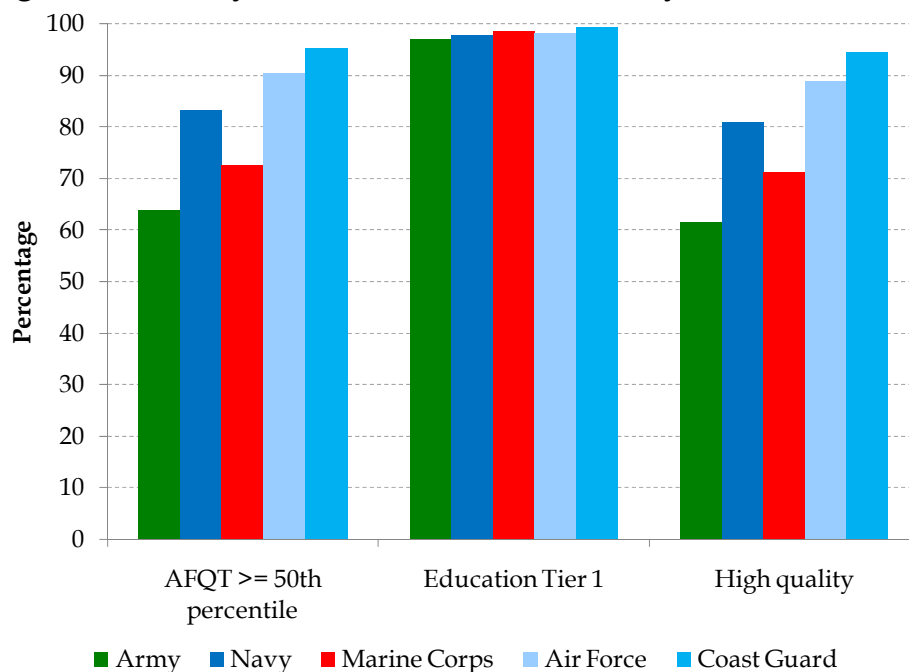
²³ Data on the quality of U.S. Coast Guard RC applicants, accessions, and endstrength are not provided.

Figure 24. Quality of U.S. Coast Guard AC enlisted applicants and accessions, FY10



Note: Applicant data are from appendix tables E-3 (AFQT score) and E-4 (education). Enlisted accession data are from appendix tables E-7 (AFQT score) and E-8 (education). Enlisted accessions include only NPS enlisted personnel.

Figure 25. Quality of AC enlisted accessions, by service, FY10



Note: DoD accession data are from appendix tables B-4 (AFQT score), B-6 (education), and B-8 (high quality). U.S. Coast Guard accession data are from appendix tables E-7 (AFQT scores), E-8 (education), and E-9 (high quality). Enlisted accessions include only NPS enlisted personnel.

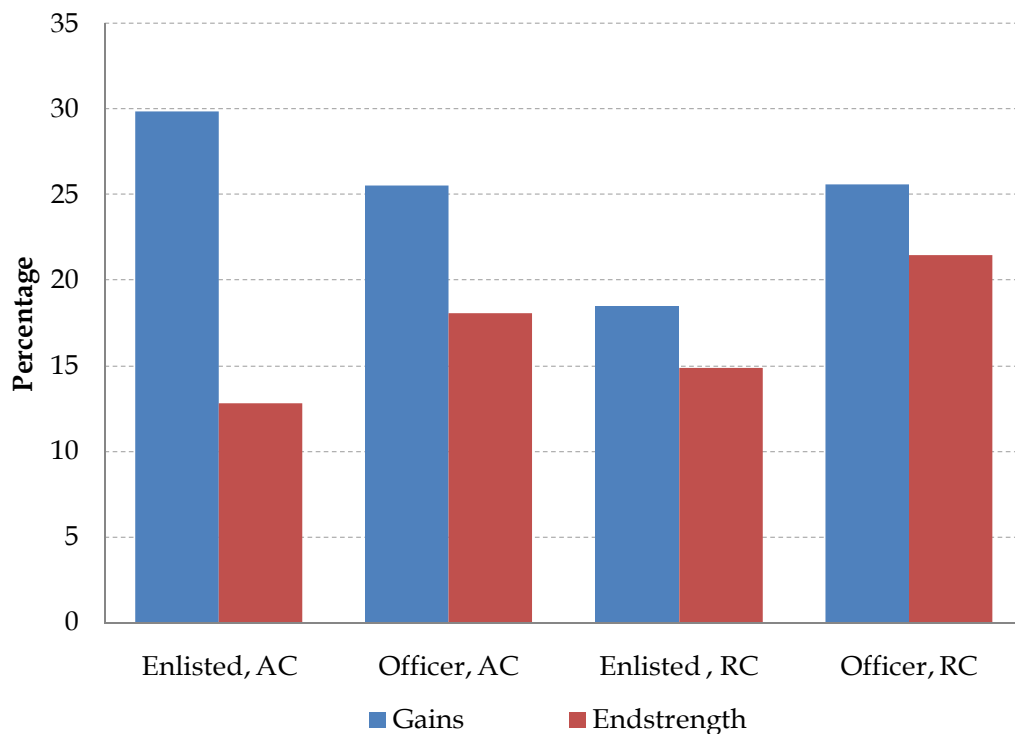
Gender, race, and ethnicity in the U.S. Coast Guard

Like the other services, the U.S. Coast Guard strives for diversity in its force. In figures 26, 27, and 28, we provide a snapshot of what the U.S. Coast Guard looked like in terms of gender, race, and ethnicity in FY10.

In FY10, a higher proportion of female accessions resulted in larger shares of women in the U.S. Coast Guard's AC and RC than in FY09.²⁴ In FY10, as we see in figure 26:

- The percentages of women in AC and RC enlisted endstrength were smaller than their corresponding percentages for officers.
- The female share of the AC enlisted population was 12.8 percent (0.4 percentage points higher than the FY09 percentage).
- The female share of AC officers was 18.1 percent (up 0.2 percentage points from FY09).
- Women made up 14.6 percent of the RC enlisted population.
- Women made up 21.3 percent of the RC officer population.

Figure 26. Female share of U.S. Coast Guard AC gains and endstrength, enlisted and officer, FY10



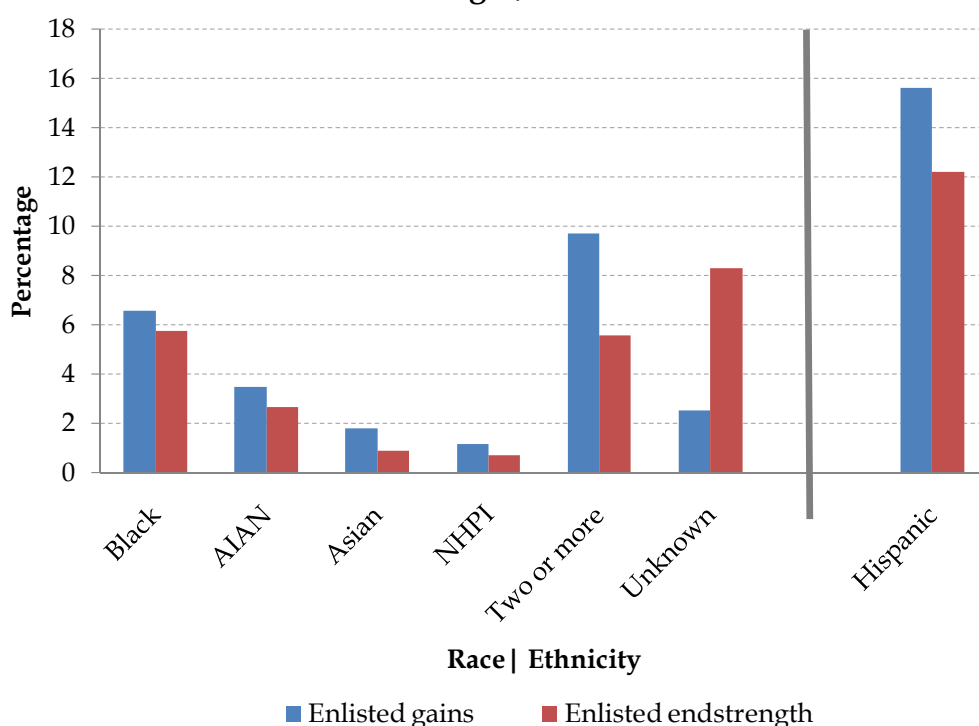
Note: Data are from appendix tables E-5, E-12, E-16, E-20, E-24, and E-27.

²⁴ FY09 data are from the FY09 Pop Rep appendix tables E-5, E-12, E-16, E-20, E-24, and E-27.

The FY10 racial and ethnic compositions of the Coast Guard's AC enlisted endstrength and officer corps are shown in figures 27 and 28. The racial groups include black, American Indian/Alaska Native (AIAN), Asian, Native Hawaiian/Pacific Islander, two or more races, and unknown.²⁵ The percentage of Hispanics is shown on the right side of the graph, and the vertical line designates a change from the race categories to the ethnicity category. Three-quarters of the AC enlisted endstrength and 80 percent of AC officers were white (not shown). Blacks made up 5.8 percent of the Coast Guard AC enlisted endstrength and 4.6 percent of the officer population. Those who self-identify with more than one race made up 5.6 percent of enlisted endstrength and 5.1 percent of the officer corps. Hispanics made up slightly over 12 percent of enlisted personnel.

Between FY09 and FY10, the U.S. Coast Guard became more diverse in its racial and ethnic composition. The enlisted proportions of blacks, Asians, those with more than one race, and Hispanics all increased. The largest growth was in the percentage of Hispanics in the AC. In FY09, the enlisted force was 11.9 percent Hispanic, rising to 12.2 in FY10. The share of Hispanics also grew for AC officers, from 6.1 percent in FY09 to 6.4 percent in FY10.

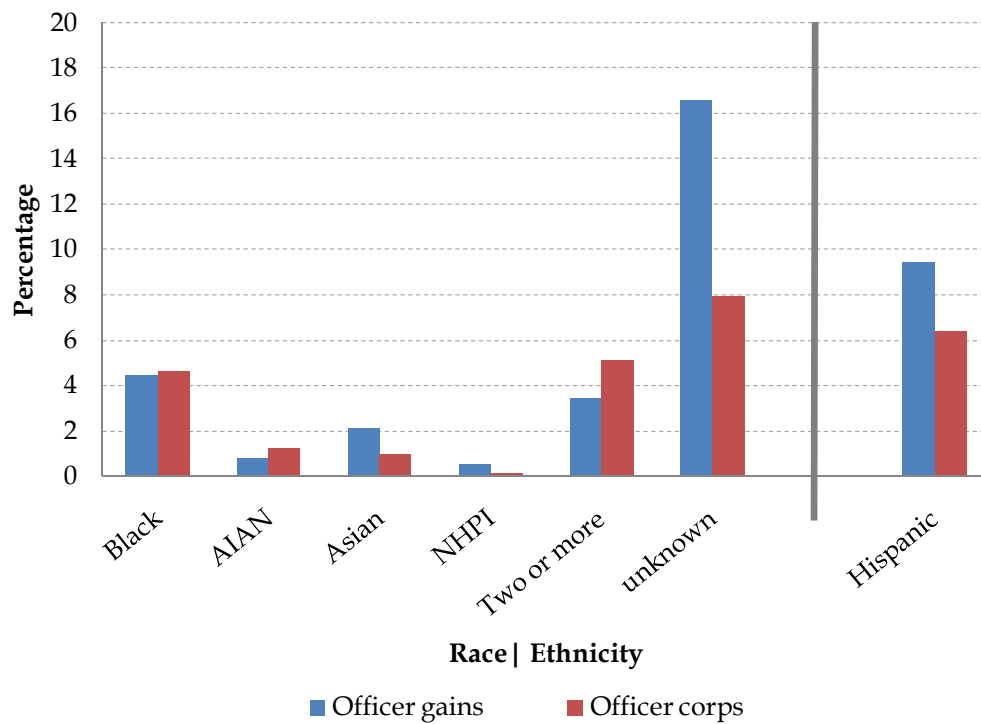
Figure 27. Minority race and ethnicity of U.S. Coast Guard AC enlisted accessions and enlisted endstrength, FY10



Note: Data are from appendix tables E-6 and E-13. AIAN denotes American Indian/Alaskan Native and NHPI is Native Hawaiian/Pacific Islander. Enlisted accessions include only NPS enlisted personnel.

²⁵ Both Hispanics and non-Hispanics are included in all race categories. For example, the black category includes both Hispanic blacks and non-Hispanic blacks.

Figure 28. Minority race and ethnicity of U.S. Coast Guard AC officer gains and officer corps, FY10



Note: Data are from appendix table E-16. AIAN denotes American Indian/Alaskan Native and NHPI is Native Hawaiian/Pacific Islander.

This completes our review of the characteristics of U.S. armed services personnel. We now turn to our special focus section on non-citizen recruits.